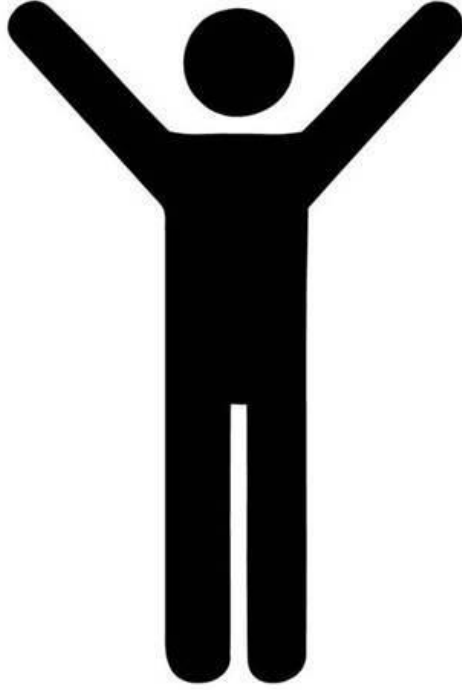


# YENİ KUŞAK EĞİTİM TESİSLERİ İÇİN



PROF. DR. HAYDAR KARABEY  
YÜKSEK MİMAR - ŞEHİR PLANCISI

# YAŞAM İÇİN



75.000.000

İLK-ORTA ÖĞRETİM SÜREÇLERİ  
TOPLUMUN 1/3 ÜNÜ  
KÜLTÜREL SOSYAL İDEOLOJİK OLARAK  
YÖNLENDİRME FIRSATI SUNMAKTADIR



25.000.000

# EVRENSEL SORUNLAR: KARBON SALINIMI, SU TÜKETİMİ!



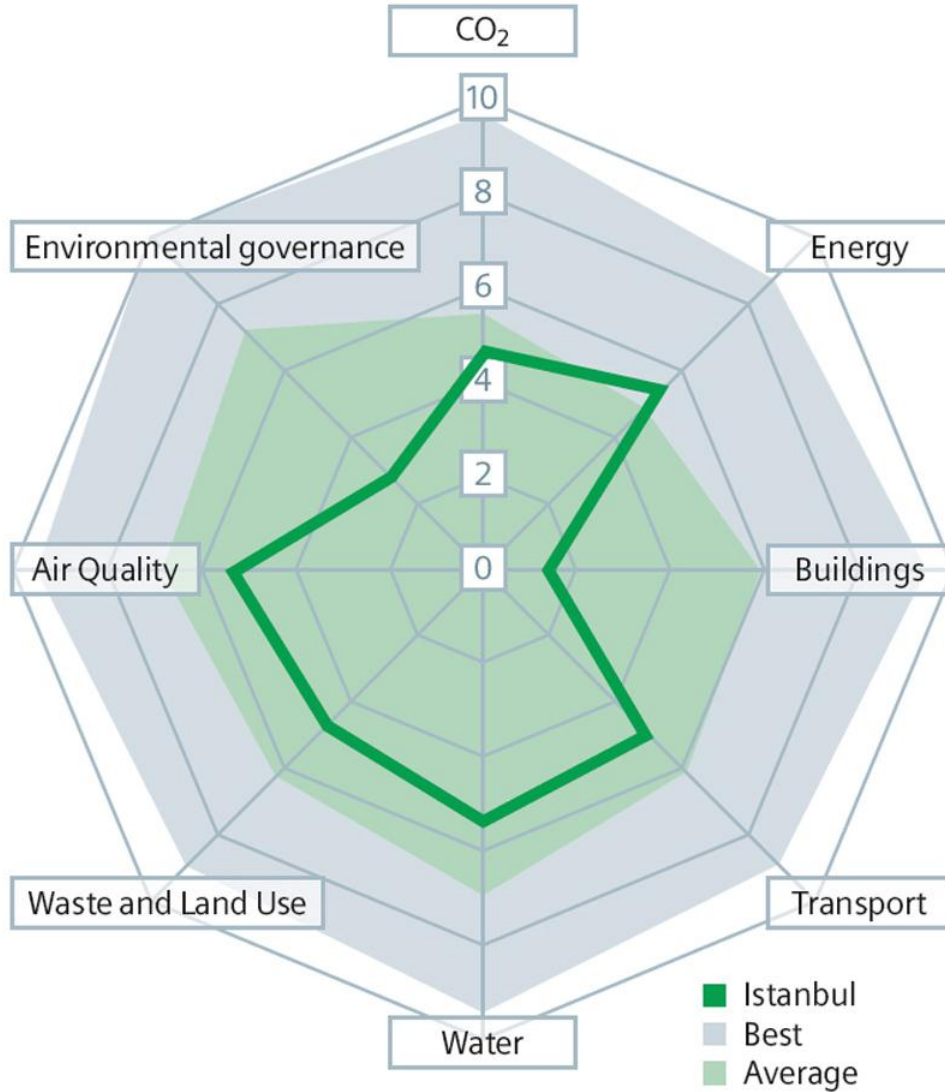


Measure Your  
Water Footprint

# MİLLİ «MESELELERİMİZ»: OSMANLI MI, SELÇUKLU MU?



# ÇEVRE DUYARLIĞINDA NEREDEYİZ?



# DUYARLIK ÖNCE YER SEÇİMİNDEN BAŞLAR



## SITE SELECTION

HEALTHCARE: NC	
Credit	SS Credit 1
Points	1 point

### Intent

To avoid the development of inappropriate sites and reduce the environmental impact from the location of a building on a site.

### Requirements

Do not develop buildings, hardscape, roads or parking areas on portions of sites that meet any of the following criteria:

- Prime farmland as defined by the U.S. Department of Agriculture in the United States Code of Federal Regulations, Title 7, Volume 6, Parts 400 to 699, Section 657.5 (citation 7CFR657.5). Projects outside the U.S. may use a local equivalent.
- Previously undeveloped land whose elevation is lower than five feet (1.5 meters) above the elevation of the 100-year flood as defined by the Federal Emergency Management Agency (FEMA), an equivalent local regulatory agency, or a professional hydrologist.
- Land specifically identified as habitat for any species on federal or state threatened or

## ALTERNATIVE TRANSPORTATION—PUBLIC TRANSPORTATION ACCESS

HEALTHCARE: NC	
Credit	SS Credit 4.1
Points	3 points

### Intent

To reduce pollution and land development impacts from automobile use.

### Requirements

#### OPTION 1. Rail Station, Bus Rapid Transit Station & Ferry Terminal Proximity

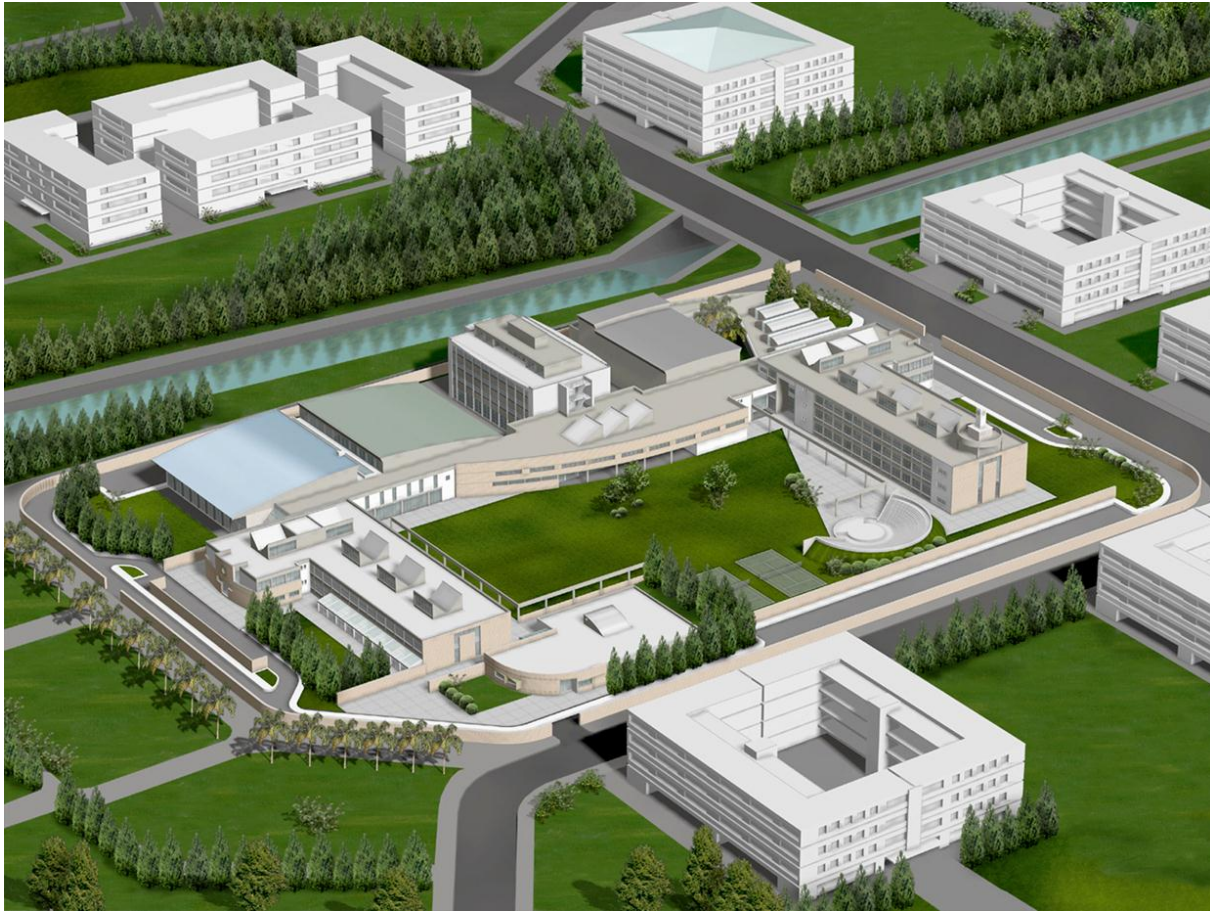
Locate the project within 1/2-mile (800 meters) walking distance (measured from a main building entrance) of an existing or planned and funded commuter rail, light rail, subway station, bus rapid transit<sup>1</sup> station or commuter ferry terminal.

For stations located greater than 1/8-mile (200 meters) from building entrance, provide an

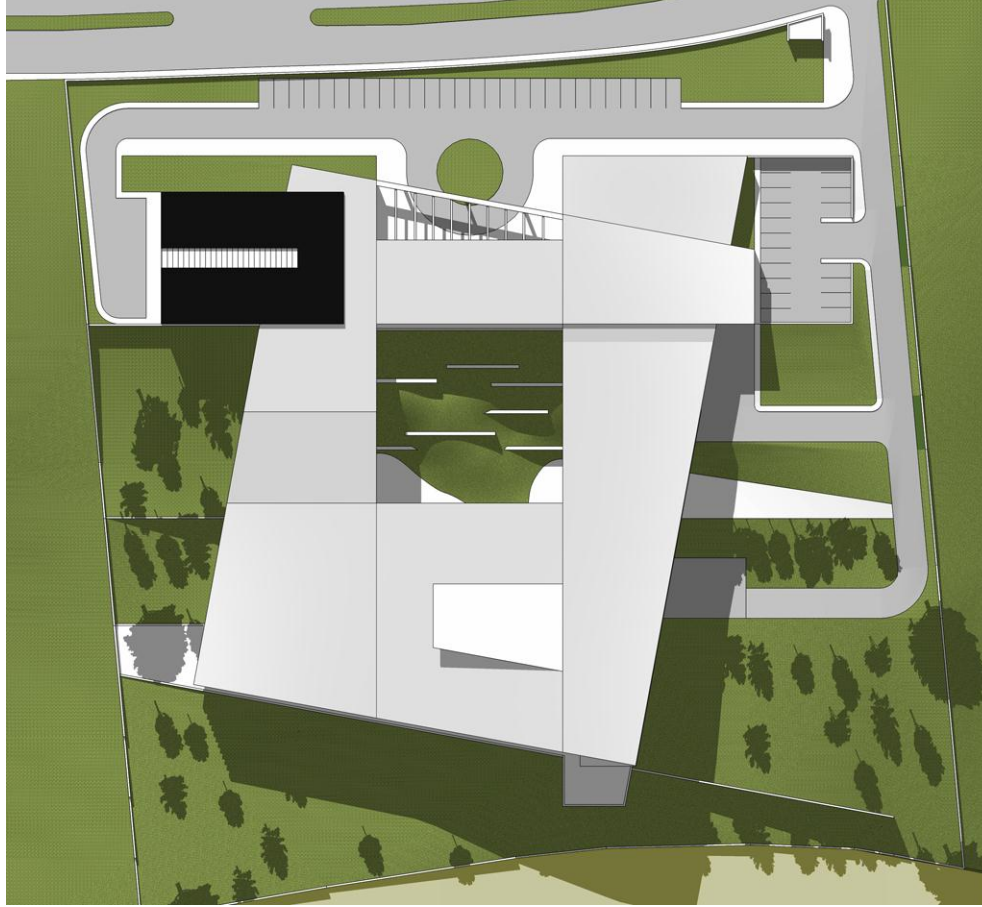
SS CREDIT 4.1



# GREENFIELD, GREYFIELD, BROWNFIELD



# DOĞA İLE BARIŞIK



# KOLAY-DENETİMLİ ERİŞİM



# ÇATILARIN KULLANIMI







# ÇEVRE VE PEYZAJ







## KİMİ TASARIM İLKELERİ:

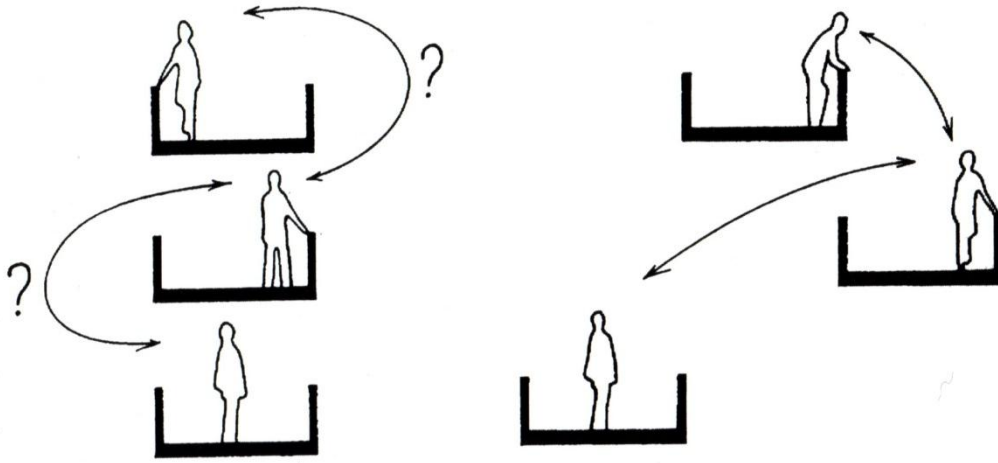
- DOĞAL IŞIK
- GÜNEŞ KONTROLÜ
- İÇ SAYDAMLIK
- DOĞAL HAVALANMA
- AKUSTİK KONFOR
- TERASLARIN KULLANIMI
- GÜVENLİK
- ESNEKLİK
- SÖKÜLEBİLİR BÖLMELER
- ENGELLİ ERİŞİMİ
- POZİTİF AYRIMCILIK
- İŞLETME ZONU KULLANIMI
- EĞİTİM-İLETİŞİM İÇİN

# AYDINLIK

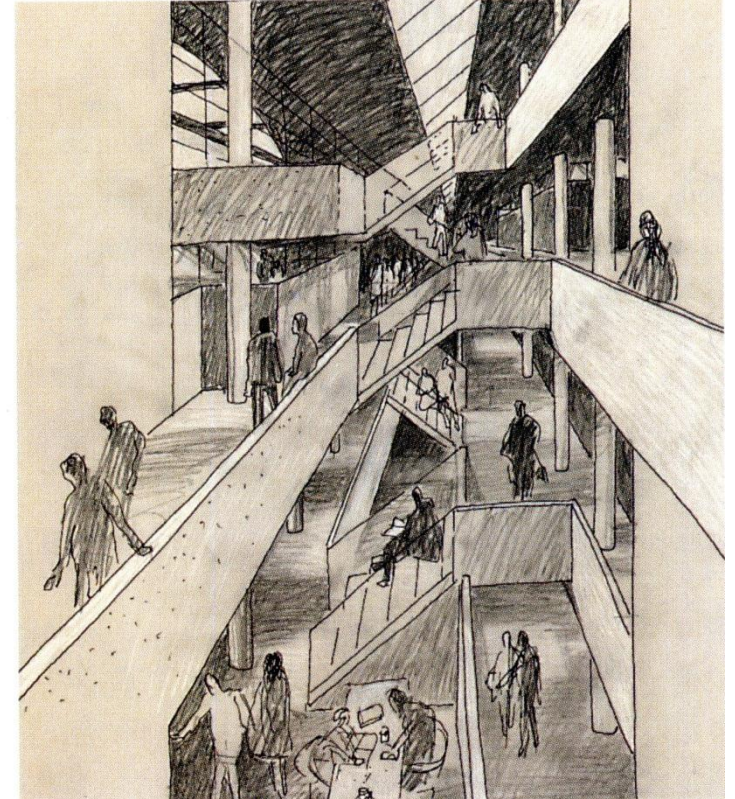








**SAYDAMLIK.İLETİŞİM.SİNERJİ**



**BOŞLUKLAR «BOŞ» DEĞİLDİR**











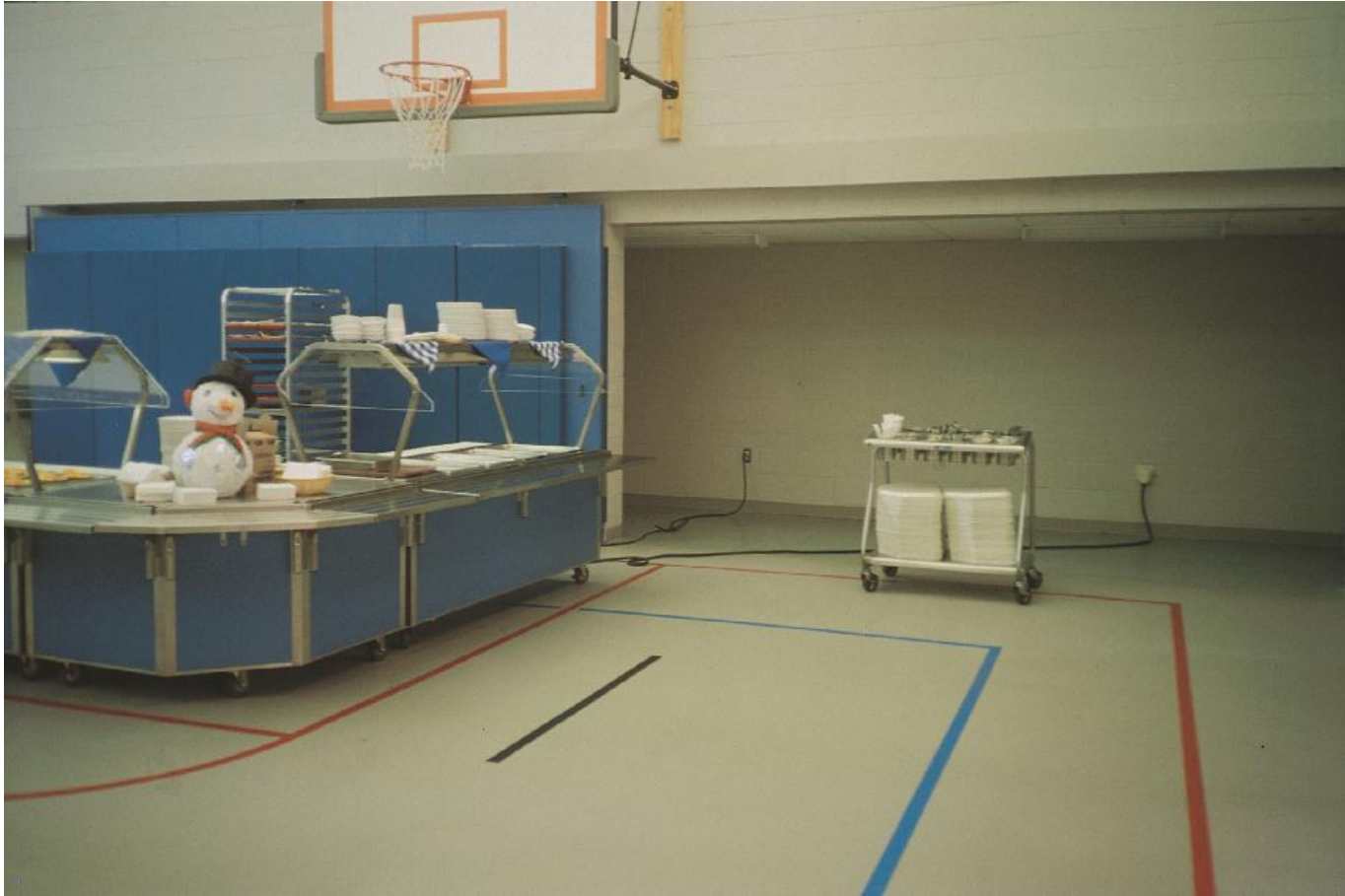






# ESNEK



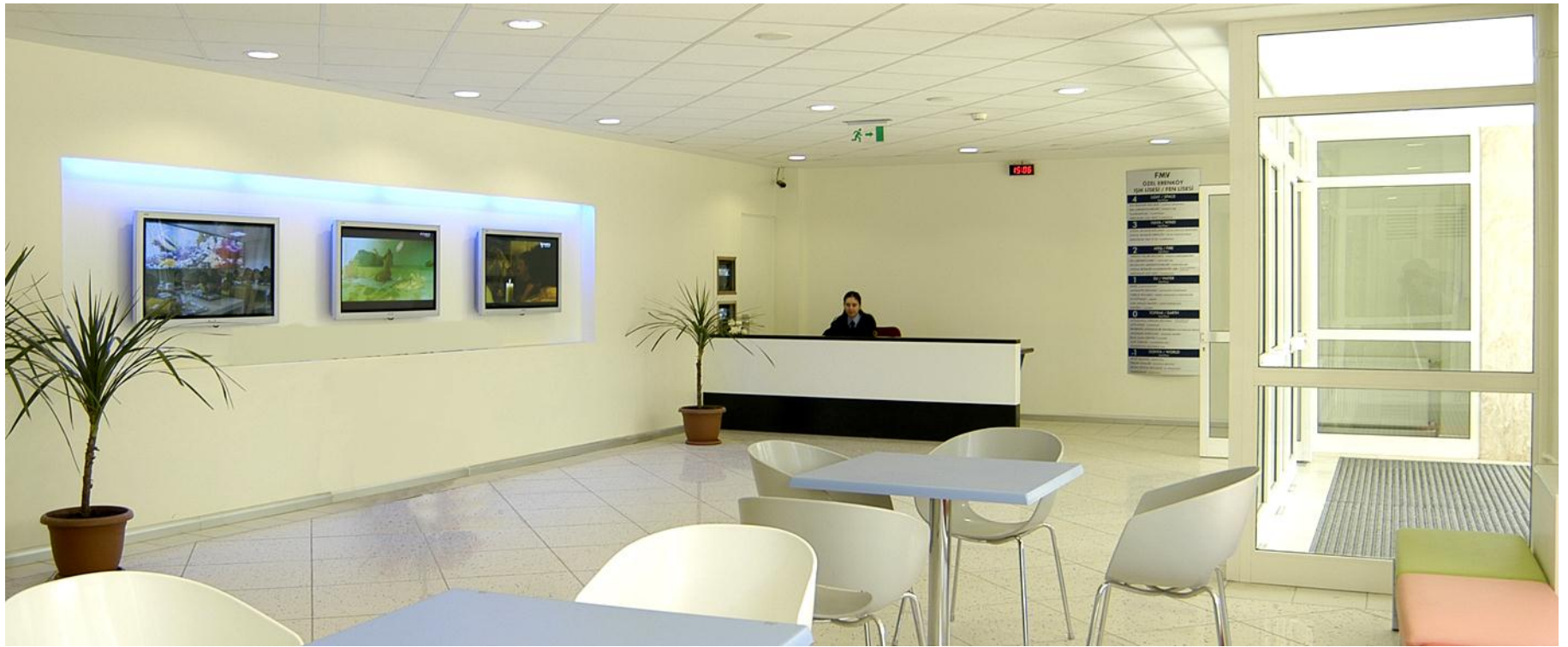






# HER YER-DURUM-KONUM... HATTA SORUN BİR FIRSATTIR





FMV  
OZEL ENERJY  
DAGI KURSU FMV KURSU

4	YEREL YEREL
3	YEREL YEREL
2	YEREL YEREL
1	YEREL YEREL
0	YEREL YEREL
1	YEREL YEREL
2	YEREL YEREL
3	YEREL YEREL
4	YEREL YEREL



# ANASINIFI: ASMA KAT-MERDİVEN-UYKU



# KANTİN: AVM-MİLK BAR



# KÜTÜPHANE: MULTI-MEDIA-LEARNING CENTER: GEÇERKEN UĞRAMAK



**T+S+M ... EVET AMA SPOR? SANAT?**





# SANAT





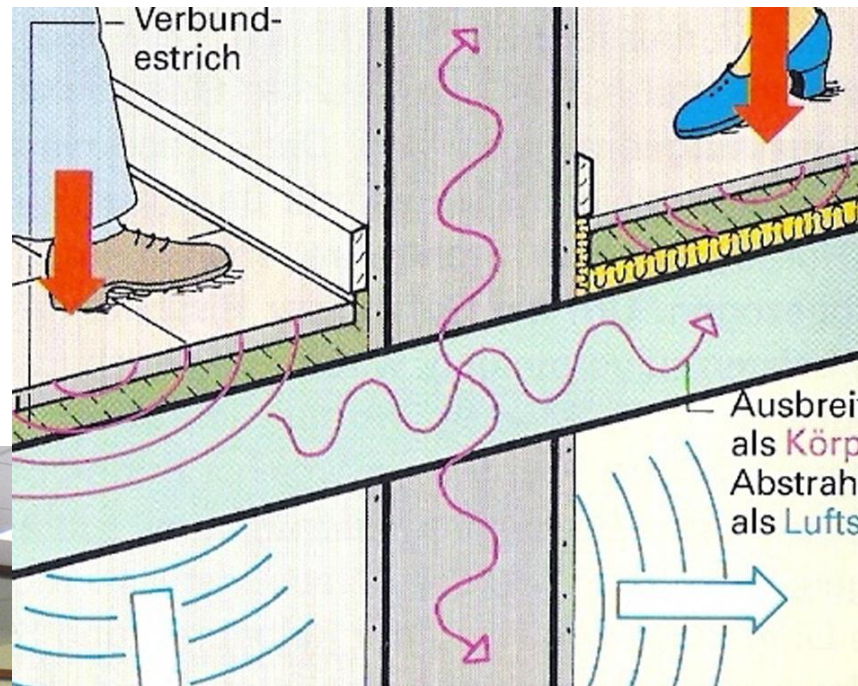
# SİSTEMİ SORGULAMAK

<b>ANASINIFI</b>	<b>1 YIL</b>	
<b>İLKÖĞRETİM</b>	<b>8 YIL</b>	
<b>LİSE</b>	<b>4 YIL</b>	
<ul style="list-style-type: none"><li>• TÜRKÇE</li><li>• SOSYAL</li><li>• MATEMATİK</li><li>• FEN</li><li>• SANAT- KÜLTÜR</li></ul>		<b>ÜNİVERSİTELER</b>
<ul style="list-style-type: none"><li>• MESLEK LİSESİ</li></ul>	<ul style="list-style-type: none"><li>• TEKNİK</li><li>• SPOR</li><li>• TURİZM</li><li>• SAĞLIK</li><li>• ZİRAAT</li><li>• DİN-FELSEFE</li><li>• SANAT</li><li>• GIDA</li><li>• ÇEVRE</li><li>• ...</li></ul>	<b>ÜNİVERSİTELER</b> <b>MESLEK YÜKSEK OKULLARI</b>

# YARATICI ÇALIŞMALAR



# AKUSTIK



# LAY-FLEX İZOLE MANTARLI KAUÇUK (SES VE TİTREŞİM YALITIMI)



Renk: siyah-bej  
Yüzey: düzgün ve granül doku  
Yanma derecesi: B2 (DIN 4102-1)  
Isı geçirgenliği katsayısı: 0.06M<sup>2</sup>K/W 5mm (DIN 52612)  
Ses yalıtım değerleri:  $\Delta L_w=20$  db

LAY-FLEX izole kauçuk mantarlı halı, zemin kaplaması ses ve darbe izolasyonunda mantar ve kauçuk malzemeyi bir arada kullanmak isteyenlerin tercihidir. Parke, seramik ve daha bir çok zemin kaplama malzemesinin altında yürüme kaynaklı ayak sesini önleme amacıyla kullanılmaktadır.

# DOĞRAMA GÜVENLİĞİ







# YURT-PANSİYON TİP PROJE OLMASA





# LAVABO-WC KONUSU



# BİR EĞİTİM ARACI

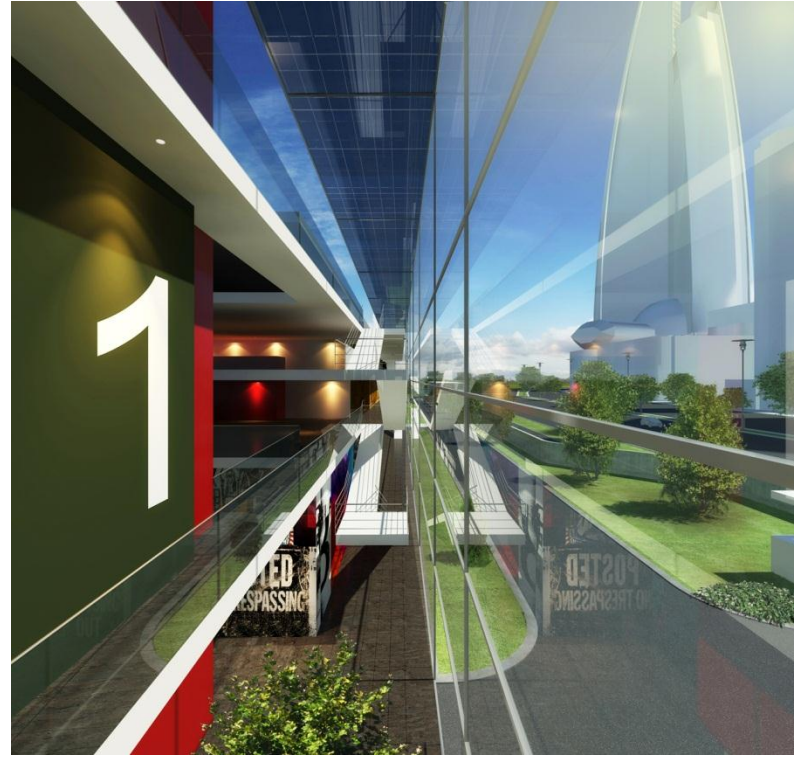




# AYDINLIK









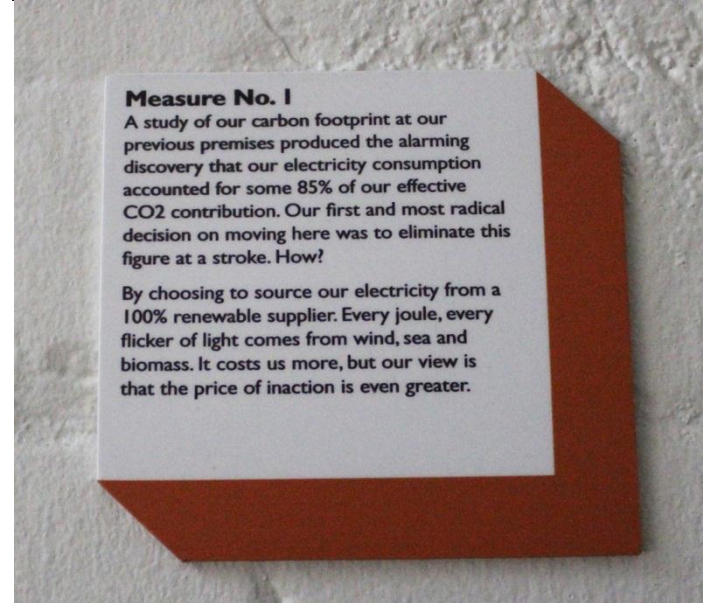
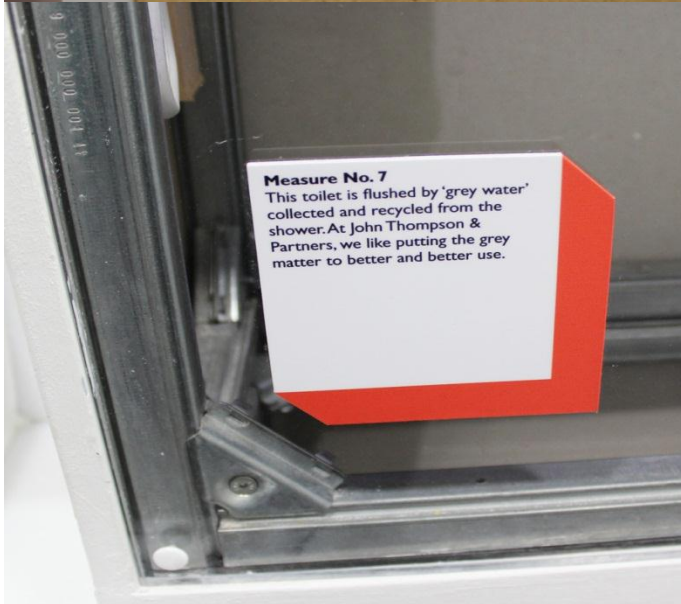
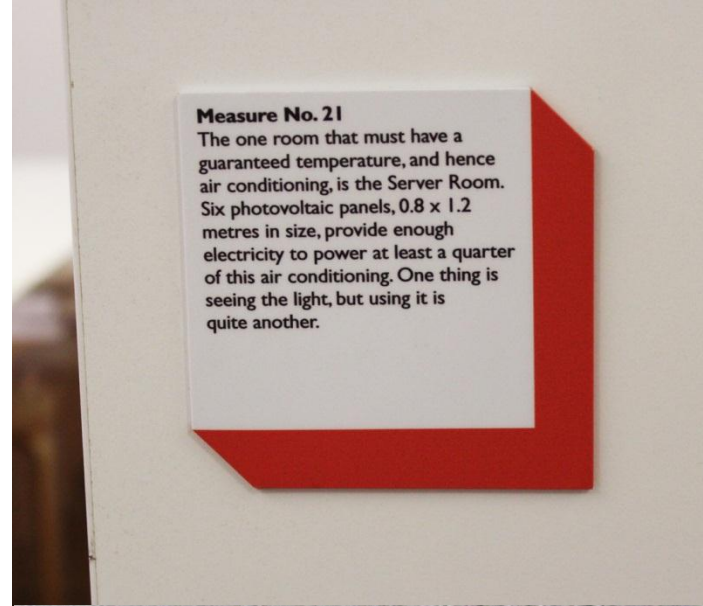
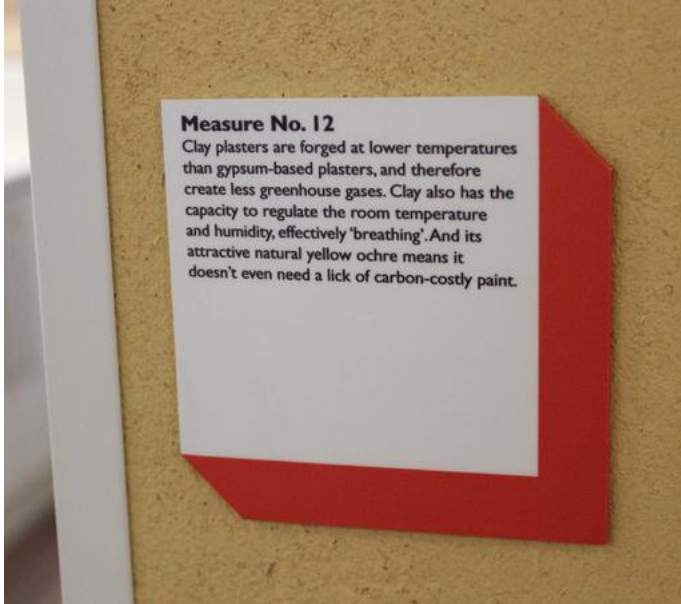


**ÖZEL.ÖZGÜN MOBİLYA**





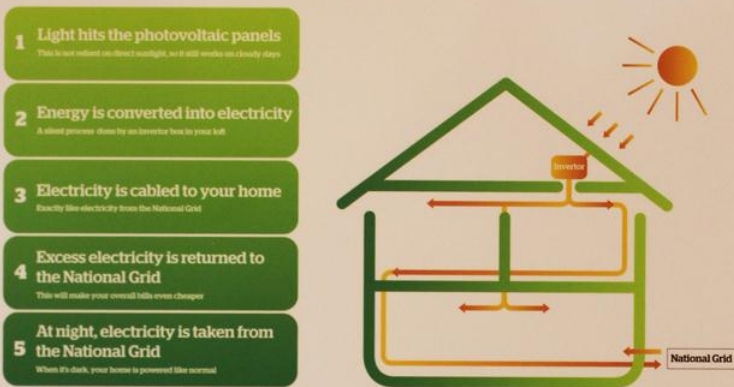
# İŞLETME SÜRECİ: ÖĞRENCİ KATILIMI, BİLGİ YOĞUN ORTAM



# BİLGİ PANOLARI

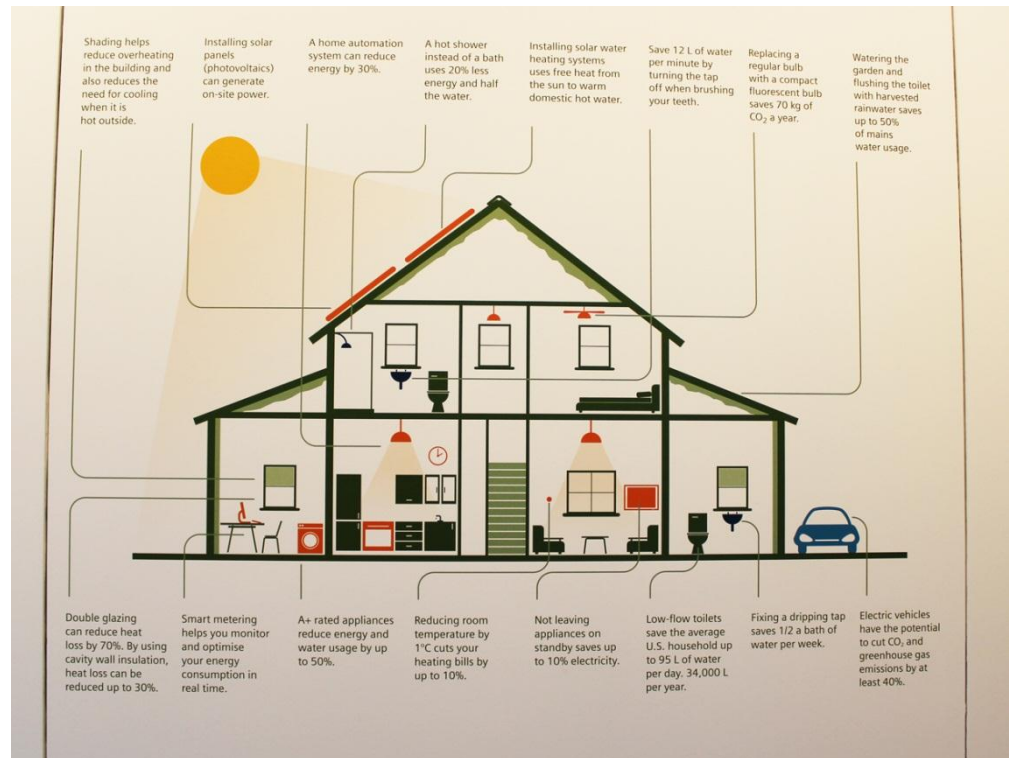
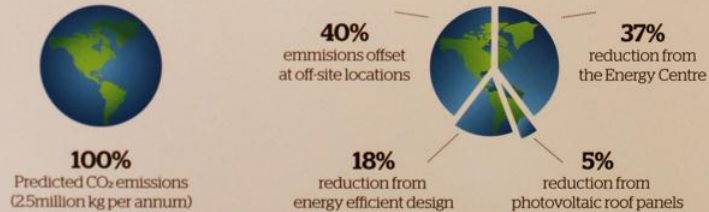
## How do photovoltaics work?

How do photovoltaic roof panels supply your home with electricity



## How will Graylingwell Park be carbon neutral?

How the development as a whole achieved carbon neutral status



# ETKİLEŞİMLİ ÖĞRENME MERKEZİ

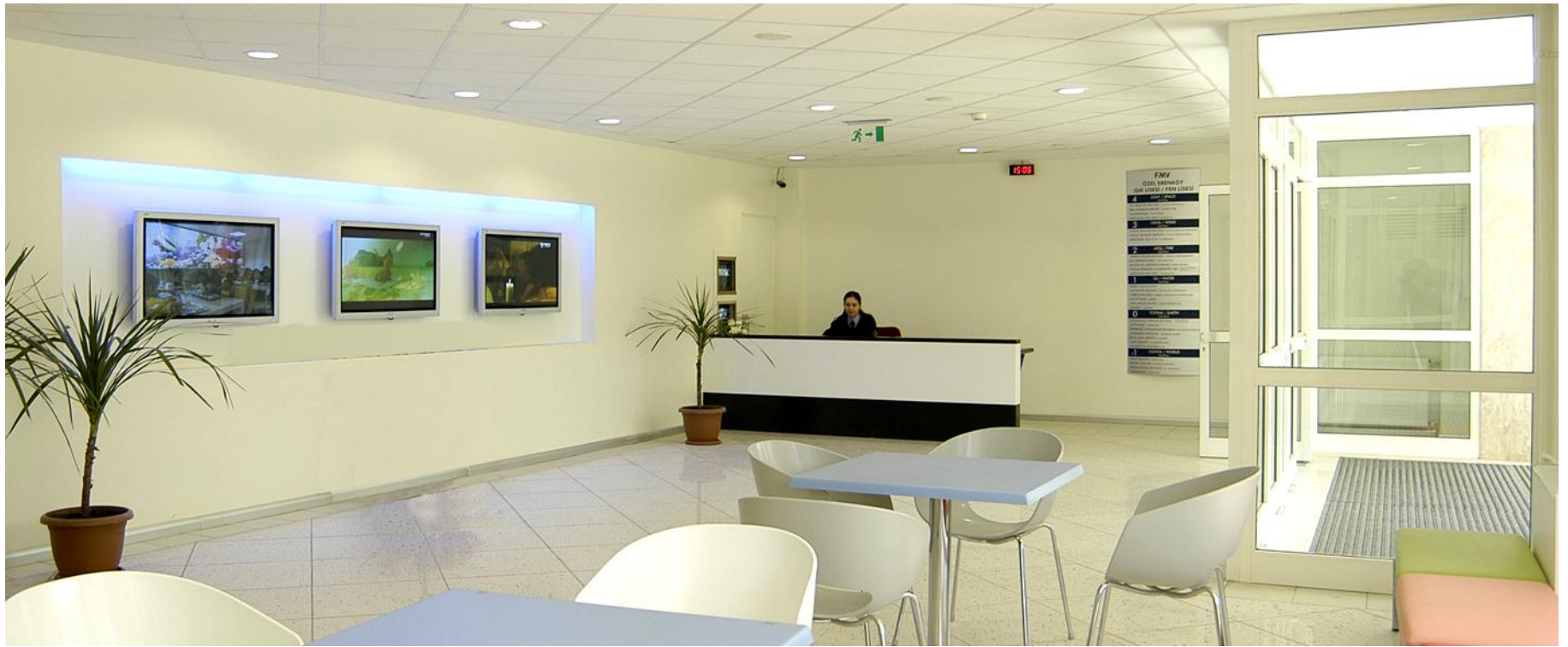




Quiet streets due to noise cancelling technology

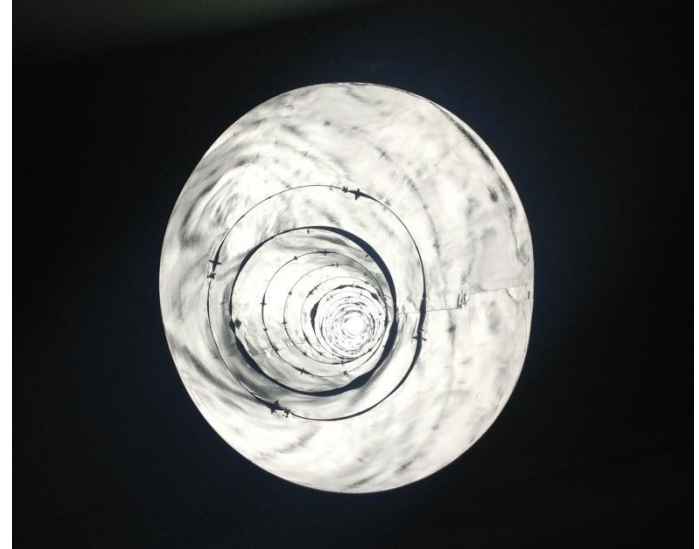
Greenwave route - traffic lights paced in favour of bikes

Intelligent light emitting road surface



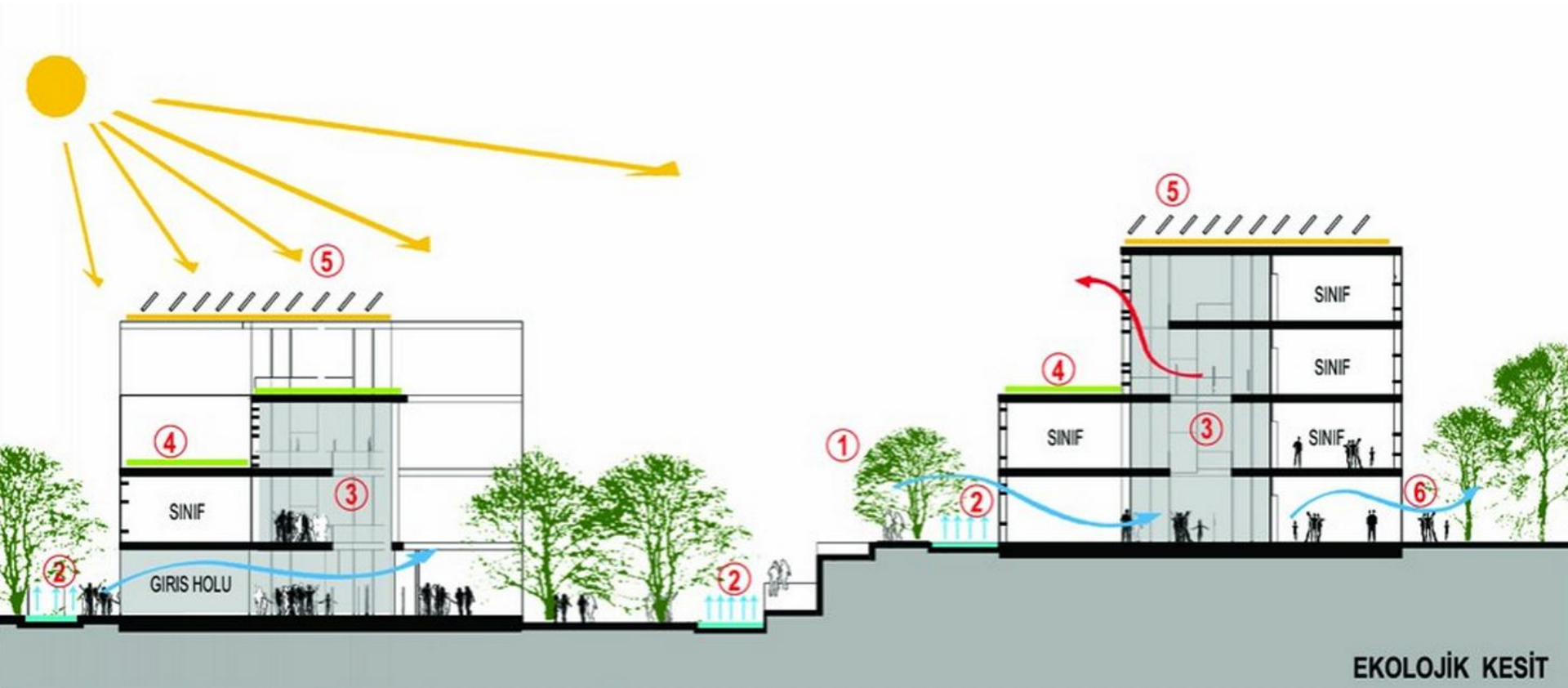
FMV  
OZEL ENERJYK  
YAKILIK VE YAKILIK  
4  
3  
2  
1  
0  
1  
2

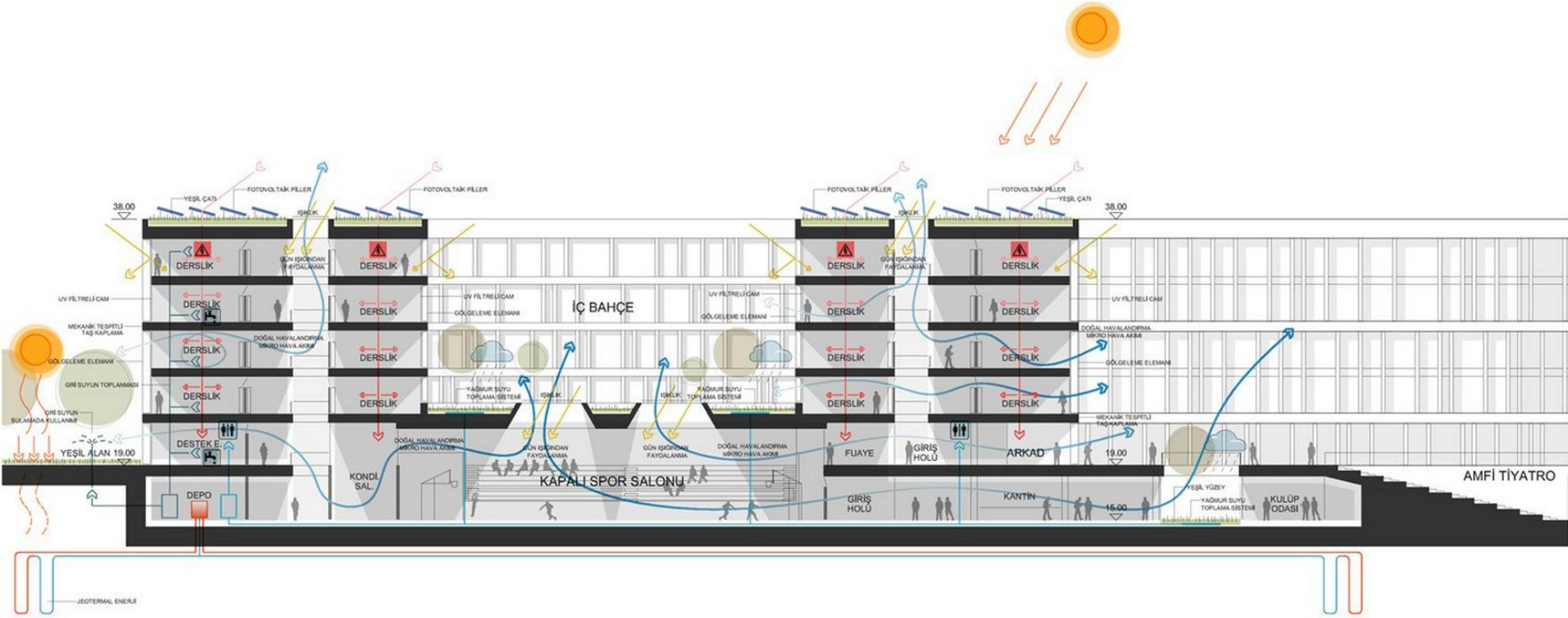






# YENİ NESİL YAKLAŞIMLAR





EĞİTİM BLOĞU KESİTİ

# ÖĞRETMEN?



# ÇEVRE TOPLULUĐU: COMMUNITY



**ARAMA MOTORLARINA  
OKUL, SHOOL, SCHULE,  
YURT, STUDENT HOSTEL  
YAZINCA!**

# OKUL:



# SCHOOL:



# SCHULE:



# YURT:



# STUDENT RESIDENCE:





HK